

Compact X-ray micro-CT  
SkyScan 1174

# Oversize and Multiple Scanning

© SkyScan 2008

Manufactured by  
SkyScan N.V.  
Kartuizersweg 3B  
2550 Kontich  
Belgium

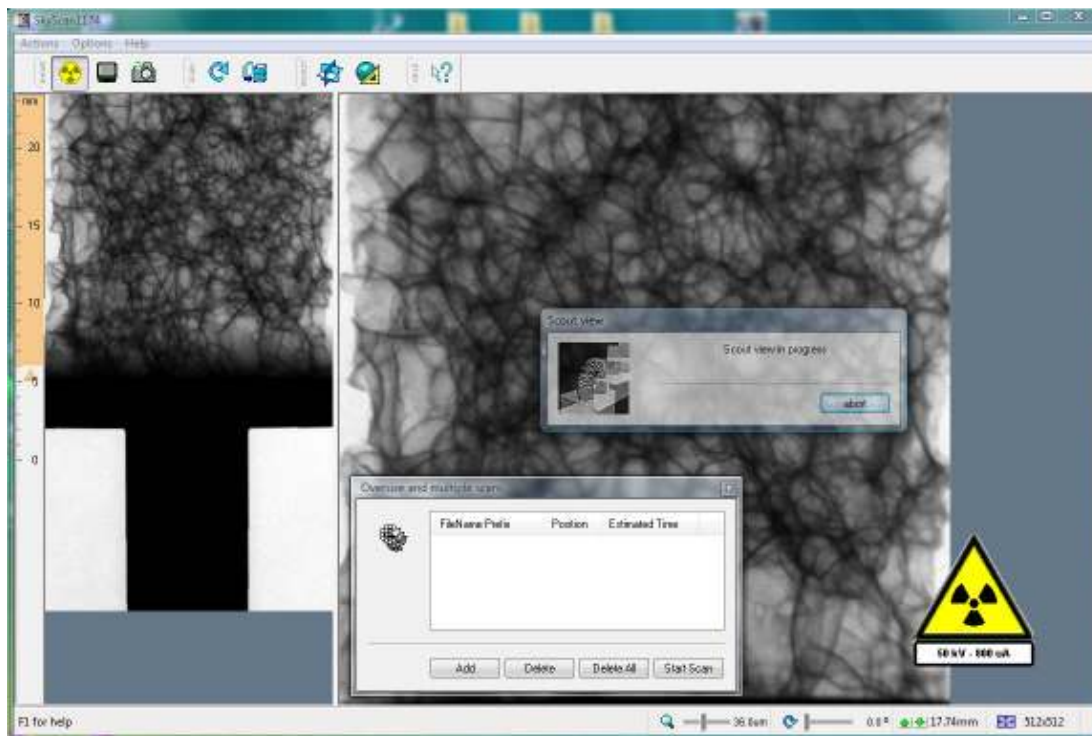


This document explains how to setup an oversize and multiple scans in SkyScan1174 system.

## Setting up an oversize/multiple scan

Start the 1174 scanner, and start the 1174 control software (version 1.5.0 or later).

1. Load single/multiple samples to scanner. Then close the scanner door and run the scout view: Actions->Set Oversize Scan.
2. You will see a dialog to show that scout view is in progress. Also "Oversize and multiple scans" window will pop up. You can stop the scout view by clicking abort button when all your samples are in view. If you do not see "Oversize and multiple scans" window, left-click anywhere in the scout view image area, to bring it back. On the left side of the scout view you can see the ruler to mark the scanning area.
3. To select the part of the sample for scanning, just click and draw by left button a vertical line on the scout view with mouse (as shown in image below) across the length you want to scan. On releasing left mouse button a message will appear to ask if you want to perform an oversize scan. Click yes to that. To move to the different parts of the sample you can double click in the scout view area. Also it is possible to see the maximum scan length in one scan by looking at the left highlighted ruler in the scout view. To have a better look at the sample resize the scout view window by dragging separator to the left or right.



To add a single scan to the batch list, select the desired scanning area by a double click inside the scout view image and click Add button from "Oversize and multiple scans" dialog. You will see the "Scanning Options" dialog

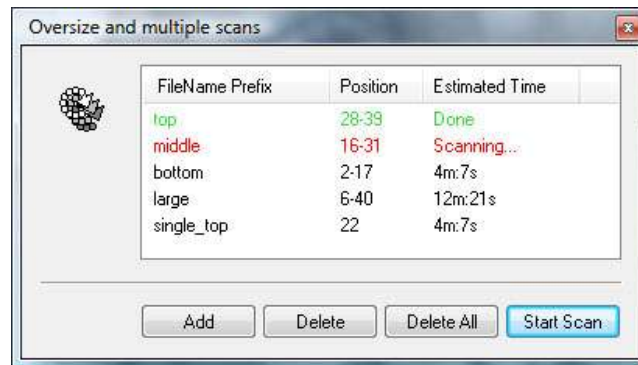
window for adjusting scanning parameters in added scan. It is possible to scan a sample with all different parameters settings in the partial scans. You can add a maximum of 20 partial oversize and/or single scans.

4. When all necessary scans have been set up for scanning, click on the "Start Scan" button at the bottom of the "Oversize and multiple scans" window to start the scans. The scans will run sequentially in the order entered in the "Oversize and multiple scans" list, with no user input required in between scans.
5. You can edit the scanning options of each batch scan by double clicking on the list of the scans even after adding to the "Oversize and multiple scans" list. You can delete one or all scans.
6. During the batch scanning the status of the scans will be displayed by following colour codes.

Red -> Scan is in progress.

Green-> Scan has been completed.

Black -> Scan is yet to be started.



### **Additional notes on oversize/multiple scanning:**

1. The warning of over-writing of pre-existing scan projection images is deactivated during a run of batch scans, to prevent an unsupervised batch scan from stopping. So take care that important pre-existing projection image files are not deleted.
2. If you stop a scan in progress during a batch run, the scanner will move on to the next scan on the list.
3. User can adjust oversize/single multiple scans with all different scanning parameters except magnification. Camera magnification cannot be changed if there is already a batch entry in the batch list.
4. To save and print the scout image click inside scout image window and select Actions->Save Image command. Click to right part with projection image redirects save and print commands to single image view.
5. To close scout view select Action->Set Oversize Scan.