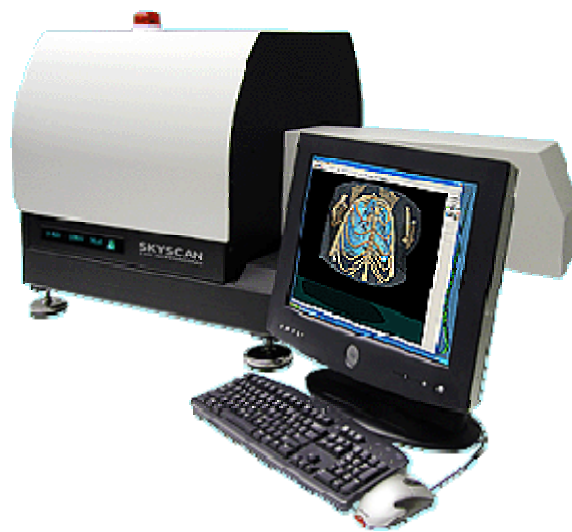





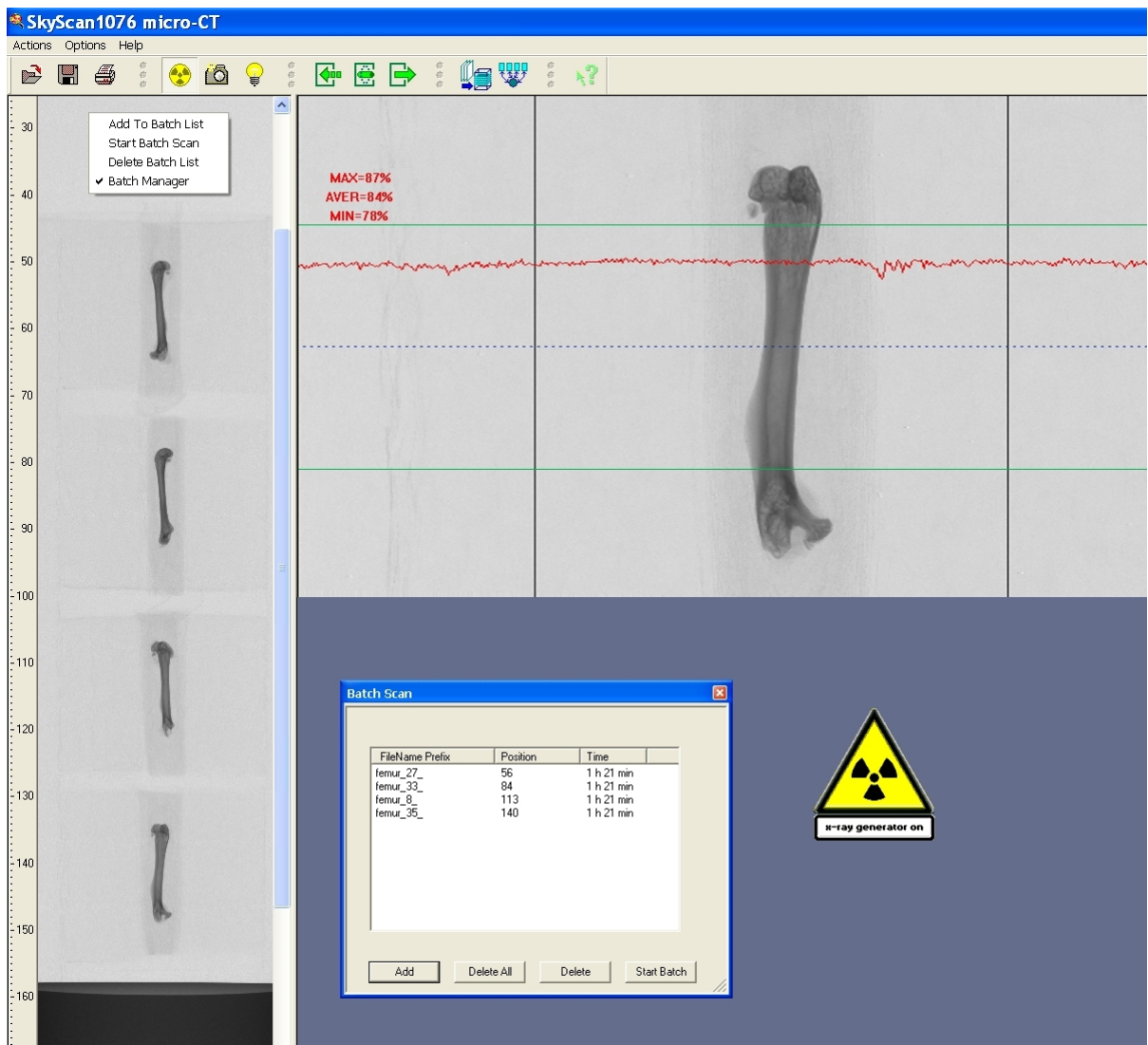
Skyscan 1076 high resolution *in vivo* scanner



Batch scanning

1. Setting up a batch scan in the 1076 scanner

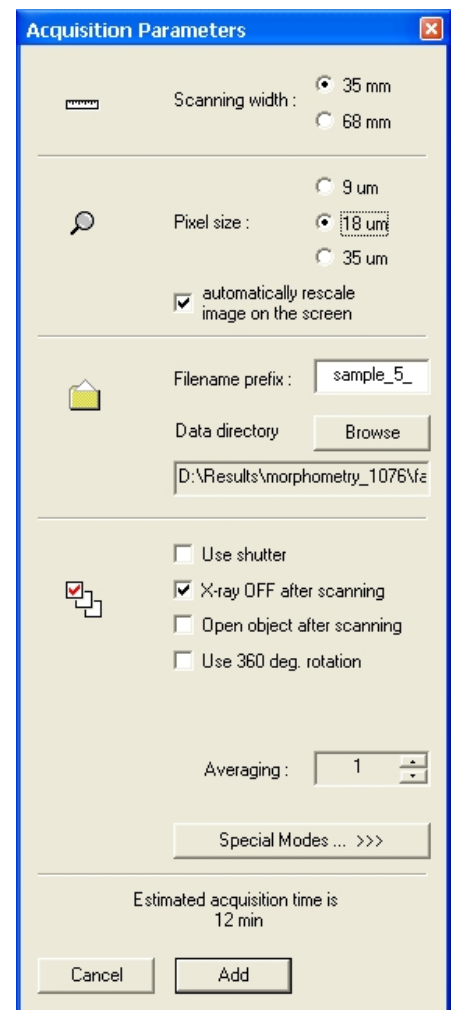
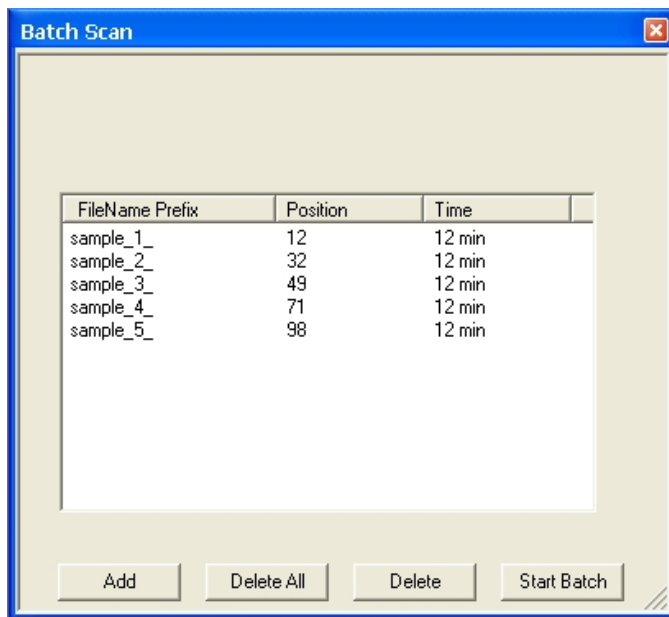
- 1.1. Start the 1076 scanner, and start the new 1076 control software with batch scanning (2.6.0) from the pc workstation.
- 1.2. Load multiple samples to scan in a line along the length of the sample bed (either a carbon or polystyrene foam bed). Then close the scanner and run the scout view (left pointing green arrow). 
- 1.3. You can stop the scout view when all your samples are in view. Now right-click anywhere in the scout view image area. A new tool-tip with four options will appear, the last of which is "batch manager" (see the image below). Select this and the batch scan window will open as shown below.



- 1.4. Double-click (left button) in the scout view image at the midpoint of the first sample that you wish to scan – at the top end of the scout view for instance. The orange band indicating the region to be scanned will appear as usual when setting up a single scan. When the object is in the right position for scanning, instead of clicking on the standard green scan button, go instead to the “Batch Scan” window and click on the “add” button. At this, a scan setup window will open which is similar (but not quite the same) as the normal scan window – see below right. (It has some functions removed that are not relevant to batch scanning).

Make your selections including specifying the dataset filename and path in the usual way. This can include special mode options such as partial width, and oversize scan. Then click on “add” at the bottom of the acquisition parameters window.

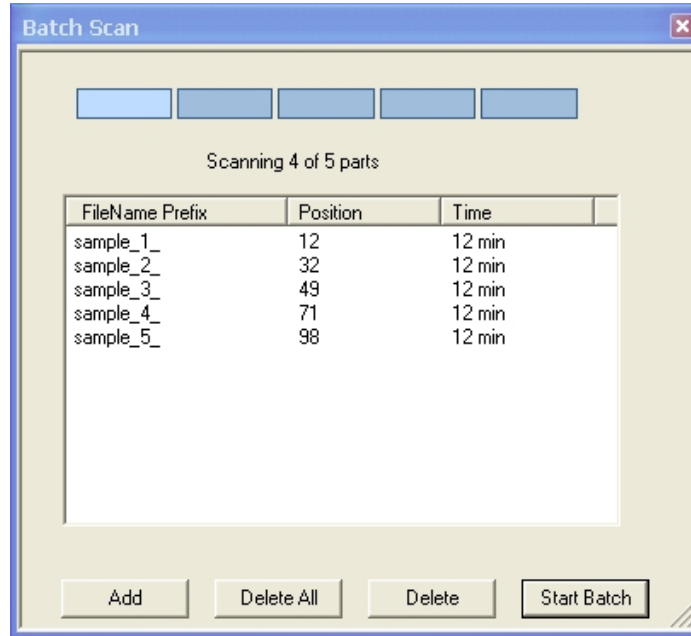
- 1.5. Clicking on “add” from the (modified) acquisition parameters window will add the scan to the list of scans in the batch scan window – see below.



- 1.6. When the full number of scans have been set up for scanning, click on the “start batch” button at the bottom left of the Batch Scan window to start the scans.

The scans will run sequentially in the order entered in the Batch Scan window, with no user input required in between scans.

- 1.7. During a batch of scans a row of sequentially highlighted blue squares will indicate that a batch scan is in progress (see below).



- 1.8. Some notes on batch scanning in the Skyscan 1076:
 - 1.8.1. The warning of over-writing of pre-existing scan projection images is deactivated during a run of batch scans, to prevent an unsupervised batch scan from stopping. So take care that important pre-existing projection image files are not deleted.
 - 1.8.2. Other warning messages – such as a reminder to take a new flat field correction if you have changed source power or exposure time – are also deactivated for the same reason.
 - 1.8.3. If you stop a scan in progress during a batch run, the scanner will move on to the next programmed scan on the list.